

# PIKE STROP-HONE RESTORATION

Welcome,

What we have is a simple demonstration of a method I use to restore the Pike Strop-Hone. There are other methods that may be successful, but this method has proven successful for me in over 6 restorations on the Pike Strop-Hone. I hope this information proves useful to you and provides you with a strop-hone that continues to give you years of great performance.

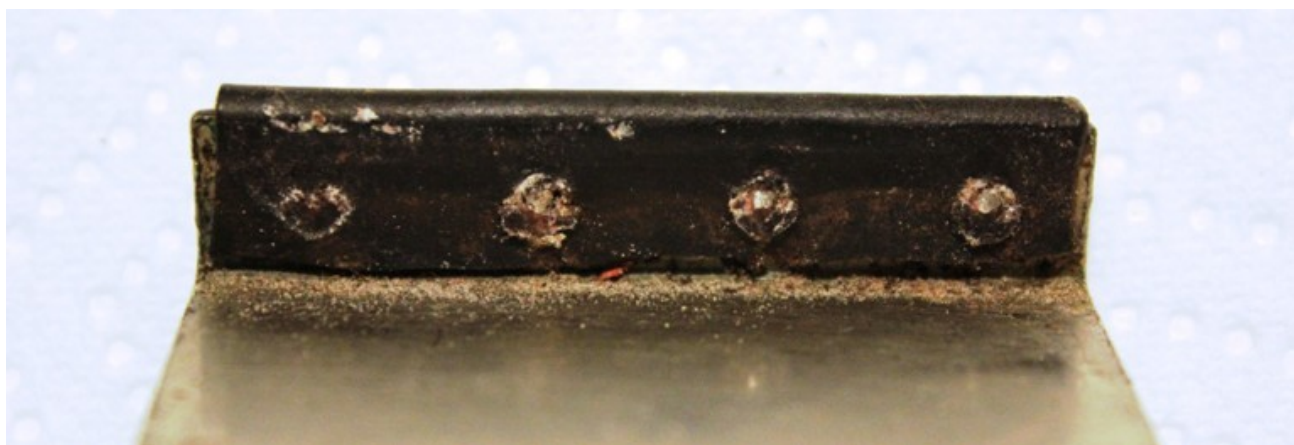
The Pike Strop-Hones surface from time to time on EBay and are often found on the shelves of antique stores. Find one in NOS (new old stock) condition is rare. Most are well used and without a box. This tends me to believe that they were well accepted as a means to maintain the edges of straight razors, by users everywhere. There are only 4 components to the Pike Strop-hone, the stone itself, the leather strop, a thin piece of cardboard and the metal clamp the holds the 4 components together.

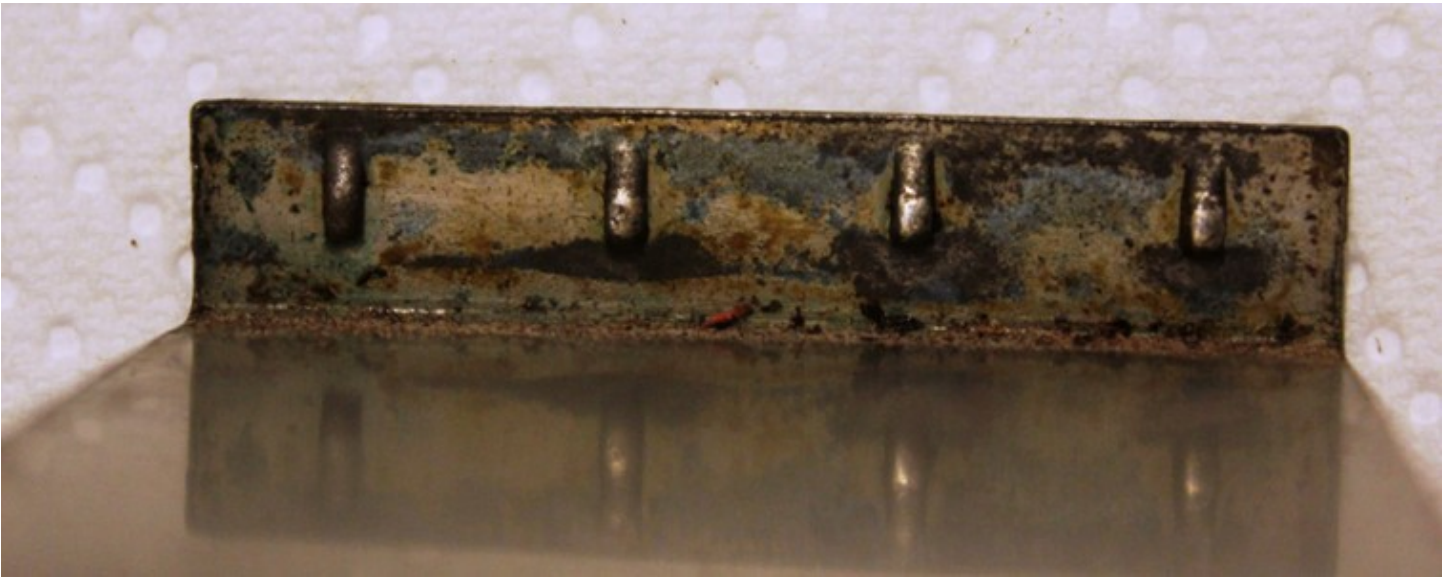
Lets take a look at a Pike strop-hone in a condition that it is typically found in.



Look at the corners of the hone, crud collects between the leather strop & the hone.

This is what you usually see when you remove the hone from the clamp.





**The condition of the metal clamp.**



**This is how the hone has become effected**



The leather is usually dry & sometimes brittle on the edges. The clamp will show signs of staining & bits of residue left by the leather.



The condition of the stropping side of the leather can vary from dark & smooth, to stained & nicked.

Lets start out by taking the components apart and cleaning them. The hone can be pulled from the clamp by using the thumb & index finger, while holding the clamp & strop with the other hand. No tools are needed. Sometimes the hone may be stuck, but alternating this method, with each end of the hone, little by little, loosens the hone from the clamp.



**⚠ CAUTION**

**Don't grab the label with your fingers !**



I like to start out with the leather first. I use Saddle Soap & a nail brush with soft bristles.

1. Soak the leather in warm water for a few minutes, in a bowl or container.
2. Scrub the front & back of the strop until you are satisfied.
3. Thoroughly rinse the leather.
4. I let the leather dry for 7 days in a lighted area, but not outside in the sun.
5. Turn the leather over everyday to expose it to the sunlight.



We will condition the strop later on in this instruction.



Next, I work on cleaning the clamp with a Brillo soap pad.



The hone is then scrubbed with dish soap & a soft bristle brush.

**⚠ CAUTION**

If your hone has a label attached to it, then you need to seal that label first. The first flow of water on it, not sealed, will loosen it & most often destroy it.

See page 8 on how to seal it.



Sometimes a nylon scour pad may be needed, so long as it is not so coarse, as to scratch the hone. Most all of the Pike Strop-Hones have sharp defined edges, this is great, if there are no micro chips on the edges. As you know, small chips turn into big ones. For this reason, I use my DMT 1200 to slightly chamfer (actually, slightly round, not a true chamfer) the damaged edges.

I do not lap the surface of the hone unless it is pitted or has a substance on it that hinders the honing process.

The piece of cardboard lies between the leather strop & the metal clamp. I simply use alcohol & cotton to wipe it down. Alcohol dries quickly & does not compromise the plain cardboard. I would not use alcohol on any paper product that has ink (writing) on it, as you risk effecting the ink.



## Labels

If you are lucky enough to get a Pike Strop-Hone with all or part of it's label attached, then you need to seal it first with something before you put the hone under water. It's actually a good thing IMO, to seal it anyways to preserve it, as the labels are the first to go away & become damaged. I used clear nylon nail polish hardener on this one.



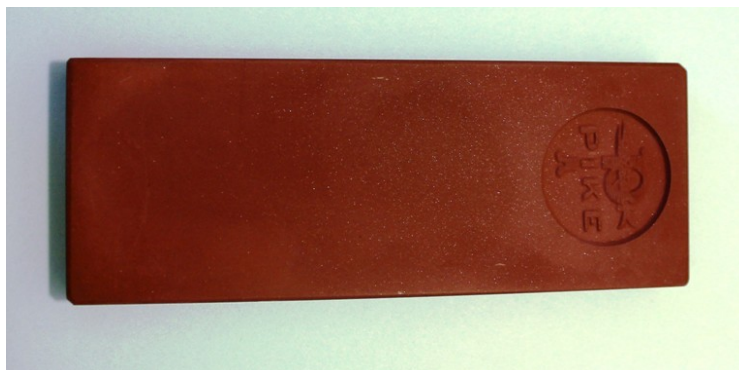


After the leather has dried for 7 days, I condition the front & back of the strop with Bickmore Bick 4 leather conditioner. You can choose any leather conditioner you like. I work in 3 coats over 2 days & once the strop-hone is reassembled, I let it remain open (not enclosed in the box or a drawer) for several days. When you decide to use your Pike Strop-Hone (after it is conditioned) is up to you.

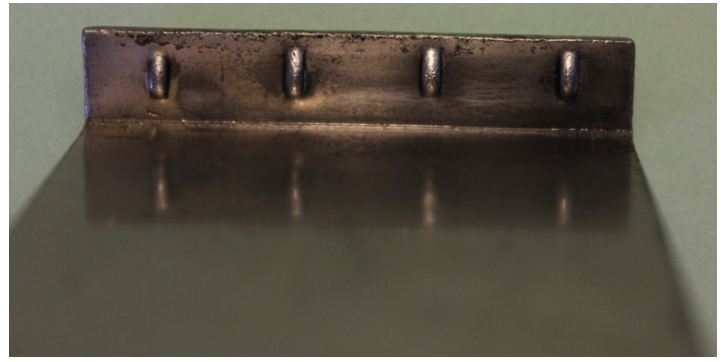


### Reassemble Your Pike Strop-Hone.

The Pike company emblem is usually kept facing down to the clamp, leaving the backside of the hone facing up, giving more of a smooth surfaced to hone on.







### BETTER SHAVES IN LESS TIME

To keep a razor at its best, it should be honed as well as stropped every time it is used. The Pike Strop-Hone enables even the amateur to do this—and in less time than for ordinary stropping alone. The hone side is used dry—no time lost wetting it up. Touching up the razor on the hone makes less stropping necessary.

#### DIRECTIONS

**Honing:** Two or three light strokes before each shave is usually enough. Lay razor diagonally on hone perfectly flat. Draw it against the edge along full length of hone lightly. Avoid honing too freely.

**Stropping:** Reverse the motion of honing; that is, draw razor away from edge. The flat, rigid position of this Strop prevents rounding of razor edge caused by the sag in ordinary strops.

**Safety Razor Blades:** Follow above instructions exactly, as the blade holder will maintain the bevel on cutting edges.

Thank You ,,, for taking the time to read this document.